

B-DE Series

PRODUCT DATA SHEET

Temperature Controls

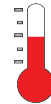
Single Set-Point, Precise Control

Large (.56" high), easy to read LED display

Vapor tight , IP21, front panel protection

±.25% full span, single digit accuracy

Single phase only.



Adjustable temperature range from -40°F(-40°C) to 999°F(538°C)



cULus

B-DE SERIES, DIGITAL CONTROLS

MODEL NUMBER	VOLTS	MAX. AMPS	REPL. RELAY P/N	REPL. SENSOR P/N	SHIP WGT. Lbs./(kg)
B-DE301	120	30	PRD-30-1	RTD1000	16
B-DE302	240	30	PRD-30-2	RTD1000	(7.3)

Control consists of gasketed plastic enclosure, thermostat, and 30 amp power relay

PROCESS TECHNOLOGY

ISO 9001:2015
WITH DESIGN CERTIFIED

Features & Values

- Large (.56" high), easy to read LED display. Provides precise control for consistent plating and etch rates in most aqueous processes
- Fluoropolymer (FEP) covered 10-foot (3m), 1000-ohm platinum RTD sensor included standard with the control. Provides extended service in corrosive liquids and can be lengthened with ordinary copper wire
- NEMA 1, IP21, flame retardant and gasketed plastic enclosure with stainless steel hardware
- 30 amp switching capacities for 120 - 240 volts
- 20°F(-7°C) to 140°F(60°C) ambient temperature range
- ±.25% full span, single digit accuracy
- Single phase only
- Pre-wired outlets for plug-in heaters (16 amp max load)

Specifications

Temperature Range Adjustable temperature range from -40°F(-40°C) to 999°F(538°C).

Options

- Scalable voltage and current inputs
- Three wire 100-ohm RTD sensors
- Special sensors required for temperatures above 500°F(260°C)
- 25-foot (7.6m) and 50-foot (15.2m) sensors
- P2, P3 or P8 thermal protection systems
- Integrated liquid level control components
- Front panel mounted digital timers
- Ground fault protection of equipment (GFPE) circuitry
- Combination controls available for three phase service and larger heater loads
- NEMA 4/4X enclosure (with internal heater for outdoor use)

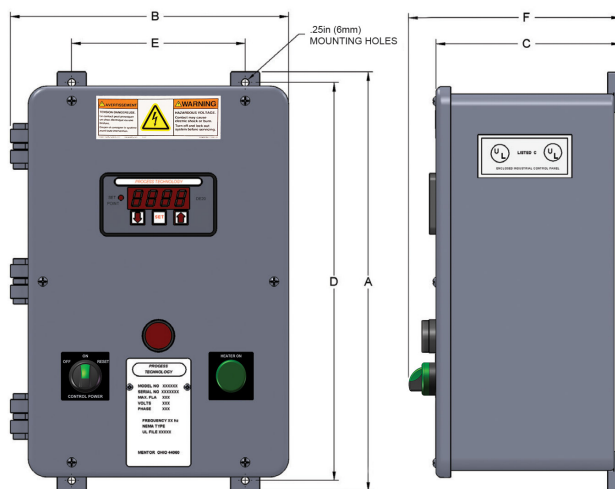
Safety Features

- Pre-wired P1 terminal blocks
- Non-volatile memory
- Programmable high alarm shutdown
- Sensor short and break protection
- Security code restricted menu
- Programmable high set point limit

Certifications

cULus

Dimensions



Dimensions	30 Amps
A - Overall height w/mounting	14.375" (365mm)
B - Overall width	9.63" (245mm)
C - Enclosure Depth	6.25" (159mm)
D - Enclosure Height	13.625" (346mm)
E - Mounting hole centers	6" (152mm)
F - Overall Depth	7.25" (184mm)

*Box dimensions may vary with options

Model Number Breakdown

Control Type	Series	Amperes	Voltage	Control Options	Standard Options
B-	DE	30	1 - 120	E = Easyplug	-R = RTD 100
			2 - 240	-VC = 100 ohm, volt, current board	-L = No sensor
			8 - 208		-H = high temperature sensor
			9 - 220		-25 = 25 foot RTD sensor
			0 - 200		-50 = 50 foot RTD sensor
					-F = FEP sleeved sensor
					-P2 = thermal protector 2 circuitry
					-P3 = thermal protector 3 circuitry
					-P8 = thermal protector 8 circuitry
					-LC** = conductive liquid level
					-ESP** = capacitive liquid level
					-D = digital timer
					-G = ground fault protection
					-N = NEMA 4X
					-NH = NEMA 4X with heater

PROCESS TECHNOLOGY